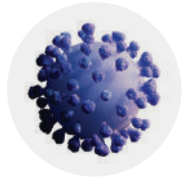


# Sex Hormone Binding Globulin (Recombinant)



Recombinant human Sex Hormone Binding Globulin (SHBG) expressed in CHO cells, providing glycosylation that closely mirrors native SHBG immunoreactivity. Designed for IVD manufacturers requiring a consistent, donor-independent antigen for assay development and commercial manufacturing for endocrinology and fertility testing. Produced under BBI's ISO 13485-certified Quality Management System with gram-level capacity.



## Product Specification

Product Code	P145-6
Name/s	Sex Hormone Binding Globulin (SHBG) / Sex Steroid-Binding Globulin (SSBG)
UniProt Association	P04278
Source	Recombinant, CHO cells
Purity	>80%
Form	Lyophilized
Presentation	50 mM ammonium bicarbonate (may contain traces of buffer salts)
Storage	Below -15°C
Pack Sizes	1 mg, 10 mg
Site of Manufacture	Crumlin, UK

## Why choose BBI's Recombinant SHBG



**Trusted primary manufacturer**  
BBI is a proven primary manufacturer of SHBG, supplying leading global diagnostic companies from our ISO 13485-certified UK facility.



**Human-like glycosylation**  
Recombinant SHBG demonstrates glycosylation consistent with native human SHBG and shows strong reactivity on major SHBG assays such as Siemens IMMULITE® and Roche cobas®.



**Secure, scalable supply**  
Donor-independent manufacturing with gram-scale capacity reduces raw-material risk and supports both development and commercial production volumes.



**Batch-to-batch consistency**  
Robust in-house processes and ISO 13485 QMS deliver highly consistent lots.

## Applications



SHBG is widely used in endocrinology and fertility testing, with applications including:

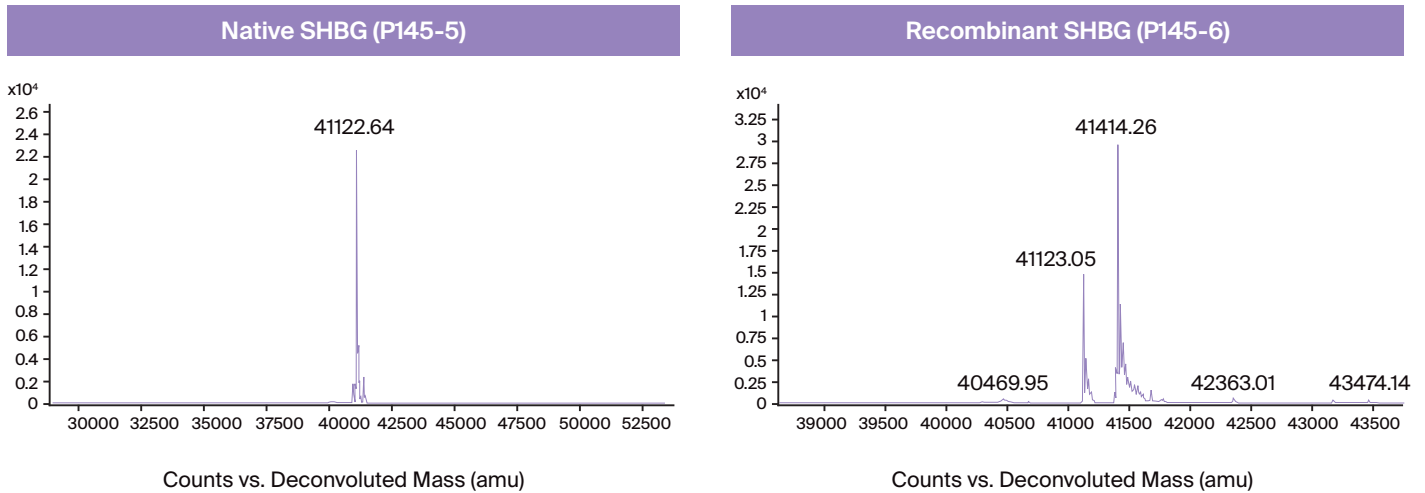
- Immunoassay Development
- Calibrator & Control Manufacture
- Method Development
- ELISA
- CLIA
- Lateral Flow
- Biosensors



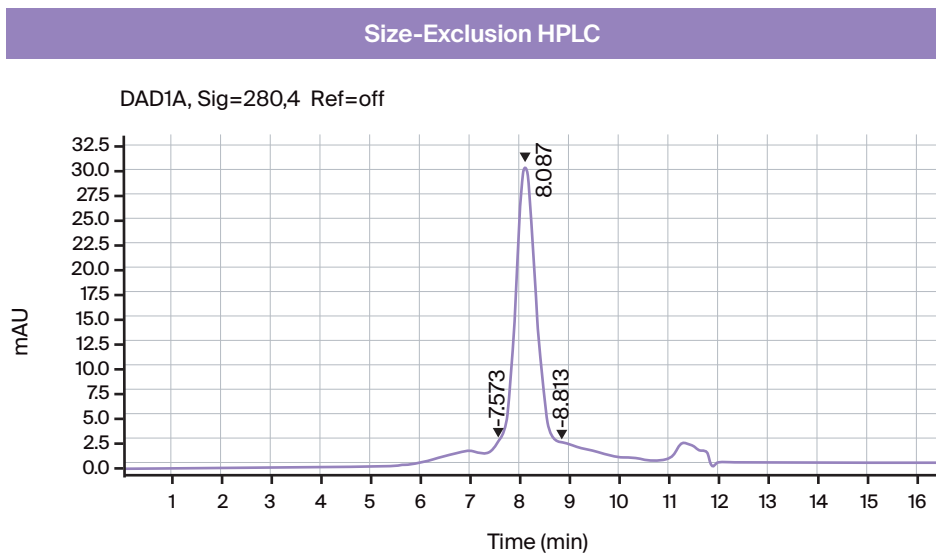
Contact our team to discuss your needs today:  
[info@bbisolutions.com](mailto:info@bbisolutions.com)

# Characterization & Application Data

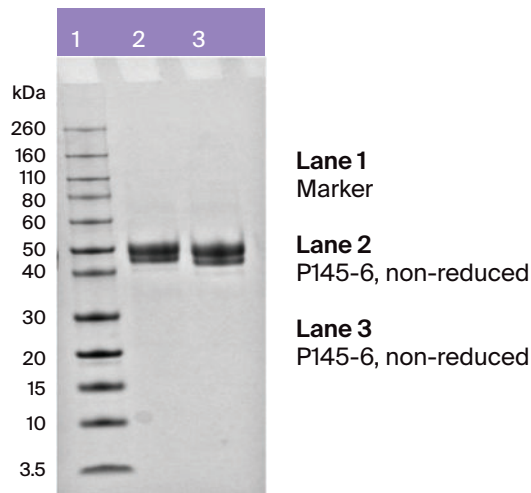
## LC\_MS Analysis - Recombinant SHBG (P145-6) vs Native Product



## HPLC Analysis - Recombinant SHBG (P145-6)



## SDS Gel - Recombinant SHBG (P145-6)



## SHBG Platform Data

Product	OD 280 mg/mL	Siemens IMMULITE® 2000 XPi mg/mL	Roche cobas® mg/mL
P145-6 Recombinant Human SHBG	1.68	1.004	1.282

Combined LC-MS, HPLC, SDS-PAGE and platform data demonstrates that BBI's recombinant SHBG (P145-6) is a clean, assay-ready antigen with strong, consistent reactivity on major SHBG platforms, making it ideal for use in SHBG calibrators and control materials.

The CHO expression system mimics mammalian glycosylation patterns, a linkage in glycosylation pattern is different, however this does not affect any SHBG functional attributes, demonstrating strong reactivity on major SHBG assays such as Siemens IMMULITE® and Roche cobas®.



Contact our team to discuss your needs today:  
[info@bbisolutions.com](mailto:info@bbisolutions.com)

## Quality Control & Release Criteria

### Immunoassay (Siemens Immulite)

2–4 mg/mL (pre-QC)  
Post-QC recovery  $\geq 90\%$

### OD280nm

Reported per lot  
Post-QC protein concentration confirmed

### Bioburden

$\leq 100$  CFU/mL  
Pass/Fail per specification

### Physical Appearance

White lyophilised solid  
Visual inspection at release



### Ordering Details – Use the following codes when ordering

Product	Code	Description
SHBG	P145-6	SHBG (Recombinant), >80% purity

### Related Products

Antigen Products	Code	Description
SHBG	P145-4	SHBG (Native), >40% purity
SHBG	P145-5	SHBG (Native), >90% purity
Prolactin	P700-1	Prolactin (Recombinant), >96% purity
Human Chorionic Gonadotrophin	P111-6	hCG (Native), >65% purity
Human Chorionic Gonadotrophin	P111-0	hCG (Native), $\geq 96\%$ purity



email [sales@bbisolutions.com](mailto:sales@bbisolutions.com)

Int: +44 (0) 1495 363 000 USA: +1 207-797-5454 China: +86 (0) 21 6104 2216

April 2026/V1