



ANTI-BURKHOLDERIA MOUSE MONOCLONAL ANTIBODY

Host	Mouse
Applications	Lateral Flow, ELISA
Isotype	IgG _{2b}
Immunogen Strain	Burkholderia Pseudomallei

About Burkholderia



Burkholderia pseudomallei is a Gram-negative, bipolar, aerobic, motile rod-shaped bacterium. It is a soil-dwelling bacterium endemic in tropical and subtropical regions worldwide, particularly in Thailand and northern Australia. Burkholderia pseudomallei is the causative agent for Melioidosis, which is also referred to as Whitmore's disease.

The Center for Disease Control (CDC) classified melioidosis as a Category B biological weapons agent. Burkholderia pseudomallei presents a stable, sturdy, easily obtainable, easily manufactured potential biological agent. In addition, due to its flu-like symptoms and potentially long incubation period, melioidosis can be difficult to accurately diagnose.

Available antibodies	BBI158 BBI159
-----------------------------	------------------

Antigens detected	Burkholderia pseudomallei Burholderia mallei
--------------------------	---

Burkholderia pseudomallei Antibody Origin	The Hybridoma cell line secreting this monoclonal antibody was generated at Dstl Porton Down (A UK Government Agency: Defence, Science and Technology Laboratory). This monoclonal antibody is manufactured and sold under licence from Ploughshare Innovations Ltd on behalf of the Secretary of State for Defence.
--	--

To find out more visit www.BBISolutions.com

Characterisation

SDS PAGE Analysis

Fig 1. Non Reduced Gel G786

Lane 1 Bio-Rad Kaleidoscope Lot: 350002760
 Lane 2 IgG Standard

Lane 4 BBI159
 Lane 5 BBI158

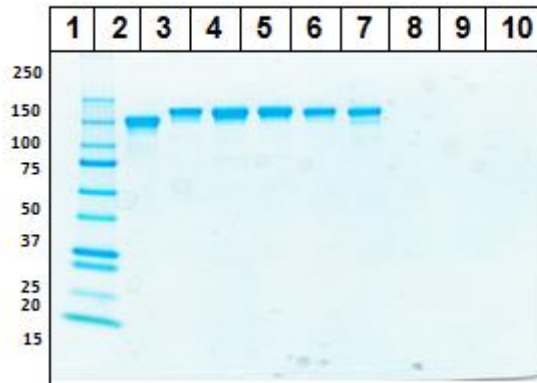


Fig 1.

Fig 2. Reduced Gel G787

Lane 1 Bio-Rad Kaleidoscope Lot: 350002760
 Lane 2 IgG Standard

Lane 4 BBI159
 Lane 5 BBI158

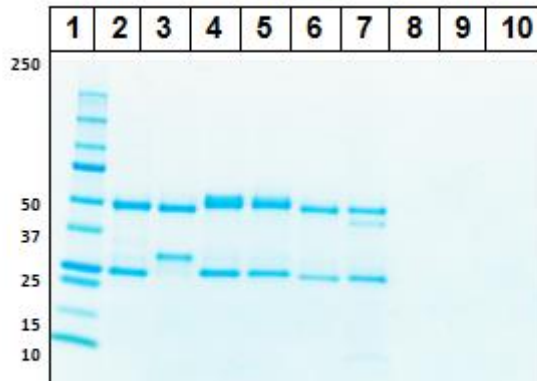


Fig 2.

Why BBI Solutions?

BBI Solutions can supply an extensive selection of antibodies for the detection of biothreat agents, explosives and infectious diseases. A number of these antibodies are sold under licence from the UK Secretary of State for Defence.