

# CERTIFICATE OF ANALYSIS

## MONOCLONAL ANTIBODIES

---

### Toxin B (*C. difficile*) Mouse Monoclonal Antibody

---

<b>Code No.</b>	<b>BM347-N4A8</b>
<b>Grade</b>	<b>Affinity Purified</b>
<b>Lot No.</b>	

---

#### RECEIVER INFORMATION

---

<b>Expiry Date</b>	
<b>Storage Temperature</b>	2-8°C (up to 1 month). Aliquot and store below -15°C (long term)
<b>Storage Notes</b>	Avoid repeat freeze thaw cycles
<b>Shipping Temperature</b>	2-8°C

---

#### PRODUCT INFORMATION

---

<b>Specificity</b>	Antibody specifically detects Toxin B of <i>Clostridium difficile</i> .
<b>Immunogen</b>	Purified recombinant <i>C. difficile</i> Toxin B.
<b>Source</b>	Ascites of balb/c mouse.
<b>BBI Solutions Clone No.</b>	N4A8
<b>Application</b>	Lateral Flow, Sandwich ELISA, Western Blot. Recommended as a capture or a detection antibody. Matched pairing partner is BM347-T4G1.
<b>Isotype</b>	IgG
<b>Host</b>	Mouse
<b>Purification</b>	Protein G
<b>Presentation</b>	Single homogenous batch, supplied liquid in a PBS buffer, pH7.2 containing 0.1% sodium azide.

---

#### HEALTH AND SAFETY

---

<b>Application</b>	For in-vitro use and research or further processing only.
<b>Precaution</b>	The product has been labelled T (toxic) under UK regulations: COSHH Sch 1(6) for sodium azide concentration $\geq$ 0.1%.
<b>Material Safety</b>	For further information and technical details, please download a Safety Data Sheet at <a href="http://www.bbisolutions.com">www.bbisolutions.com</a> or contact your BBI Account Manager.

**ANALYSIS**

TESTS	SPECIFICATIONS	RESULTS
-------	----------------	---------

**Determination Method:**

Protein Concentration by  
Optical Density at 280nm  
using  $E_{0.1\%,1cm} = 1.38$

>0.5 mg/ml

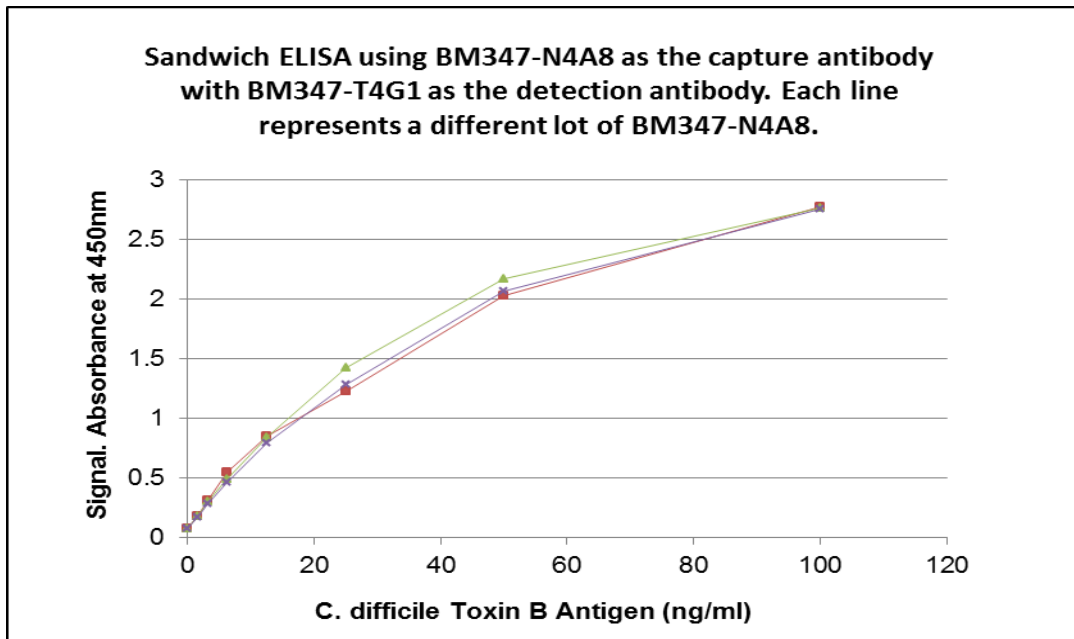
mg/ml

**Purity**

Defined by a major band on coomassie stained SDS-PAGE.

**Sandwich Elisa**

An example showing testing of several lots of BM347-N4A8.



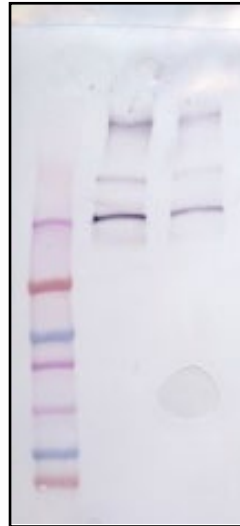
**Western Blot**

C. difficile Toxin B antibody BM347-N4A8 lot 834-201 was shown to bind to purified C. difficile Toxin B.

Lane 1: Molecular Weight standards

Lane 2: C. difficile Toxin B antigen at 66 µg/ml

Lane 3: C. difficile Toxin B antigen at 33 µg/ml



<b>Name:</b>		<b>Position:</b>	
<b>Signed:</b>		<b>Date:</b>	